

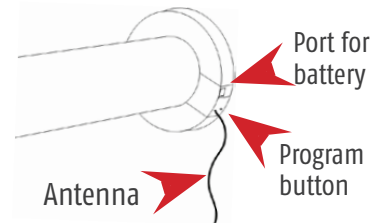
# Roll Up 28 RTS & WireFree Roll Up RTS Programming



## 1 Motor overview

The motor head of the WireFree Roll Up incorporates a program button and a port for the battery pack cable.

The program button is used to reset the motor to factory mode or to pair additional remote controllers.



## 2 Power to the motor

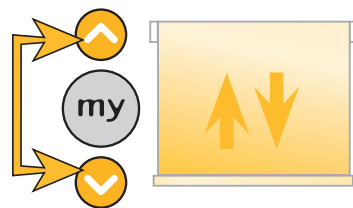
Reloadable Battery Wand



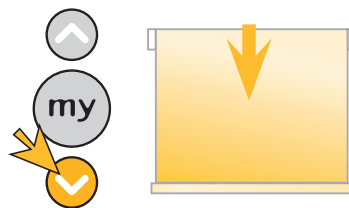
Connect battery pack - Continue to step 3

## 3 Control the motor and check the correct direction of rotation

Press and hold simultaneously the Up and Down button. The blind should jiggle.



Press the Down button.  
Does the blind move down?

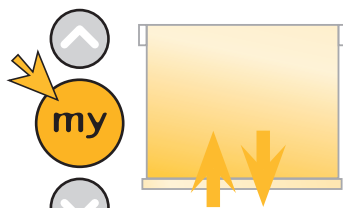


YES - The blind moves down while pressing the down button -  
Go to step 5

NO - The blind moves up while pressing the down button -  
Continue to step 4

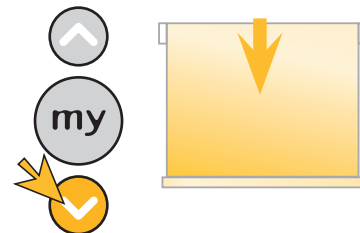
## 4 Reverse the direction of rotation

To reverse the direction of the motor, press and hold the Stop button until the blind jiggles.



Press for 5 secs

Press and hold the Down button to test that the motor direction is correct.



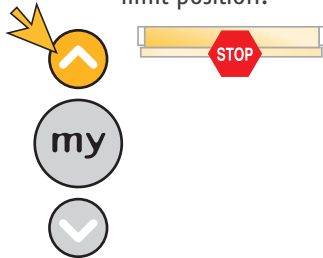
Continue to step 5

# Roll Up 28 RTS & WireFree Roll Up RTS Programming

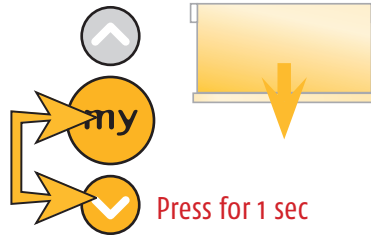


## 5 Record the Upper limit position

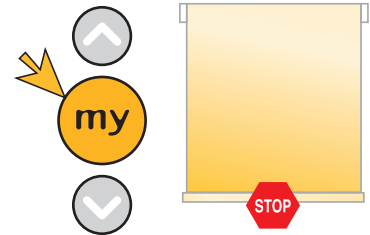
Use the Up button to move the blind until it reaches the upper limit position.



Press and hold the Stop and Down buttons until the blind starts to move down.

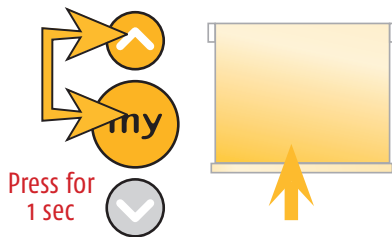


Stop the blind at the desired lower limit position (adjust with Up or Down if required).



## 6 Record the Lower limit position

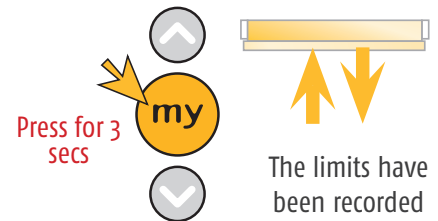
Press and hold the Stop and Up button until the blind starts to move up.



The blind will automatically stop at the up position.

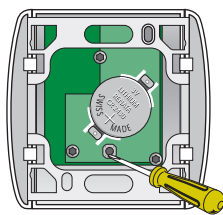


Press and hold the Stop button until the blind jiggles to confirm the limit settings.



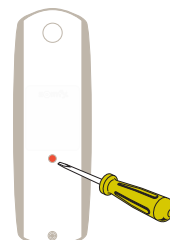
## 7 Programming the RTS control to the motor

Press the program button on the RTS control until the product jiggles.



Centralis RTS

OR



Telis RTS



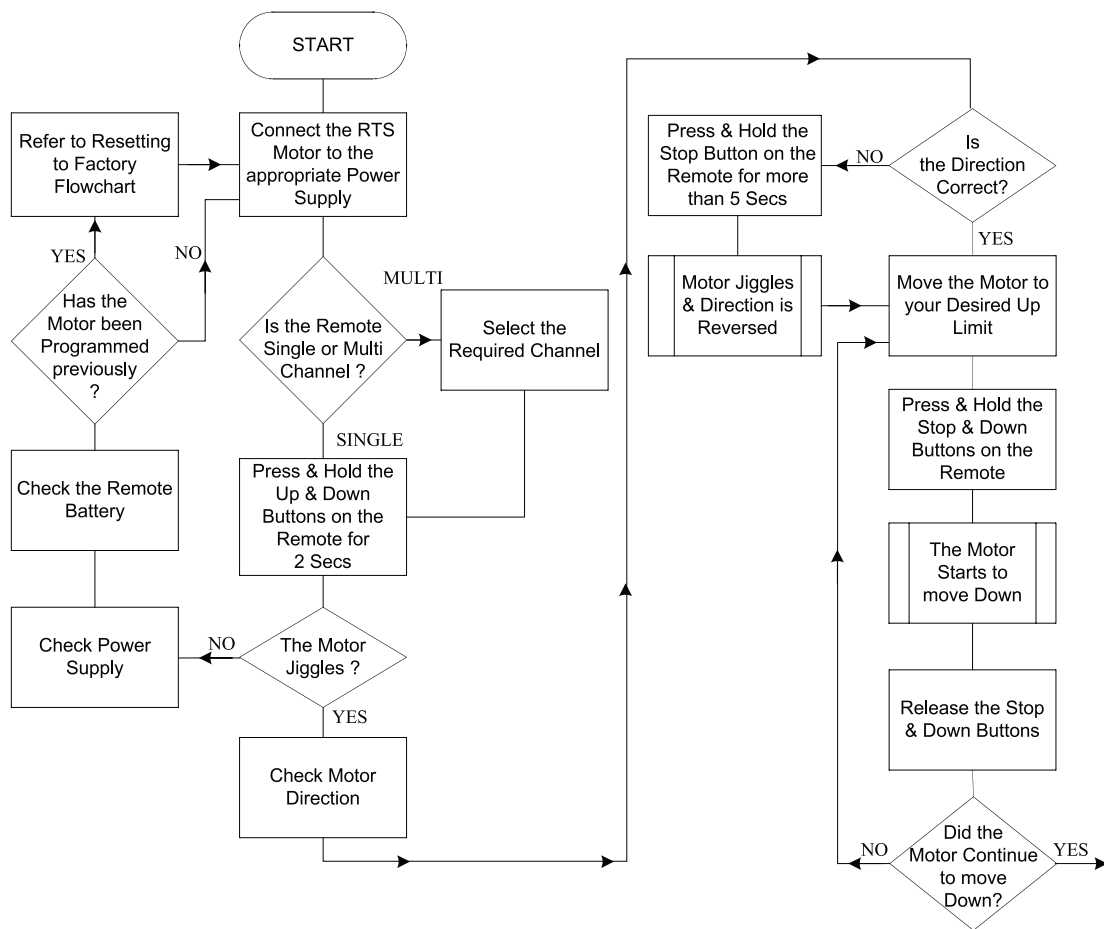
jiggle = control recorded ✓



Use only 1 RTS control throughout the commissioning procedure.

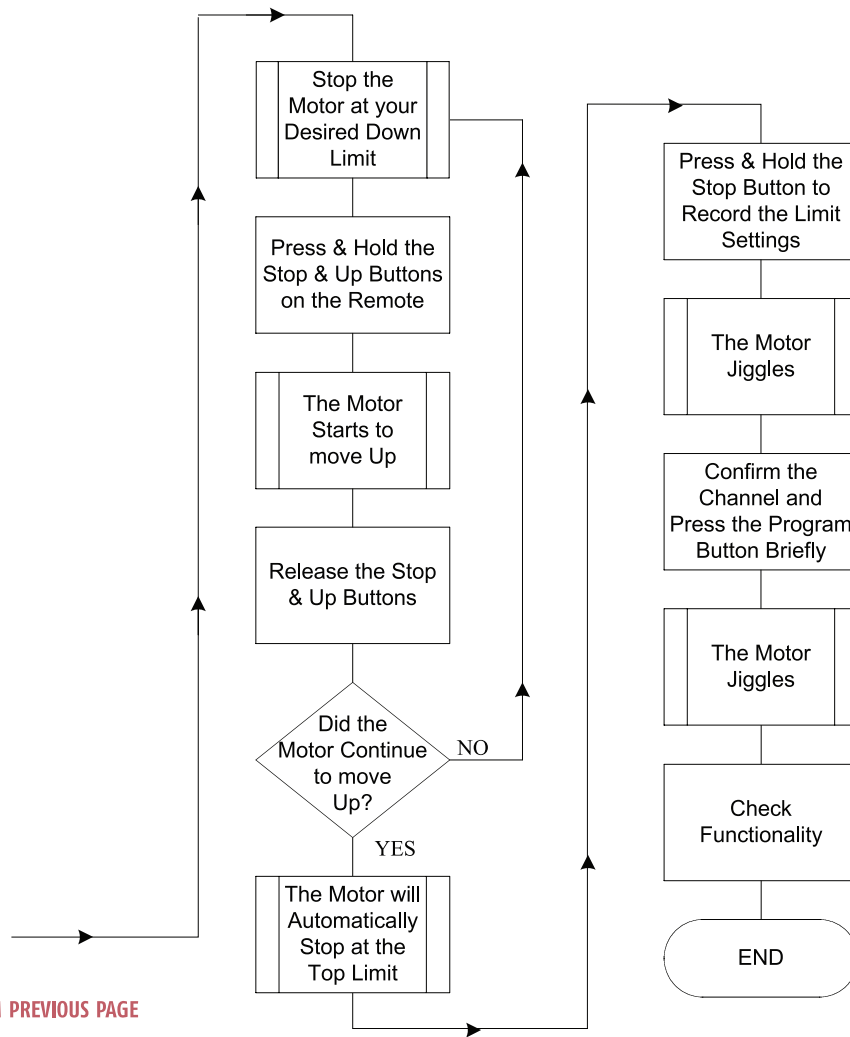


# Roll Up 28 RTS & WireFree Roll Up RTS Programming



CONTINUED OVER TO NEXT PAGE

# Roll Up 28 RTS & WireFree Roll Up RTS Programming



FROM PREVIOUS PAGE

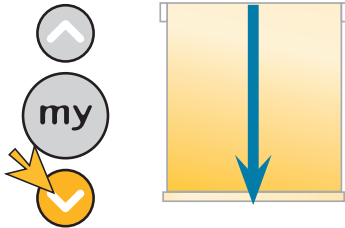
# Roll Up 28 RTS & WireFree Roll Up RTS

## Adjusting RTS motor limit positions

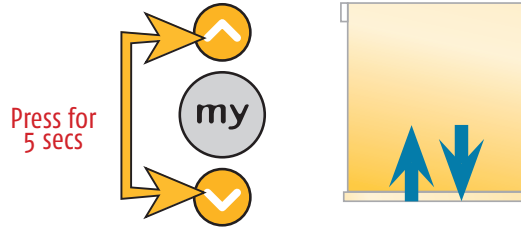


### 1 Adjusting the Lower limit position

Press the Down button and send the product to the lower limit position.



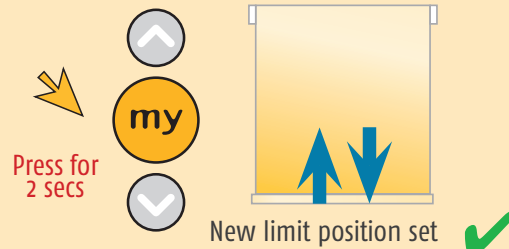
Press and hold the Up and Down buttons until the product jiggles.



Adjust to the correct position using either the Up or Down button.

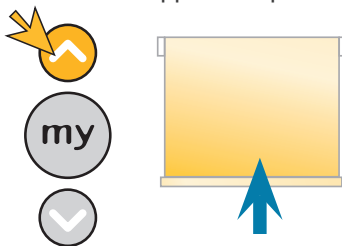


Press and hold the Stop button until the product jiggles.

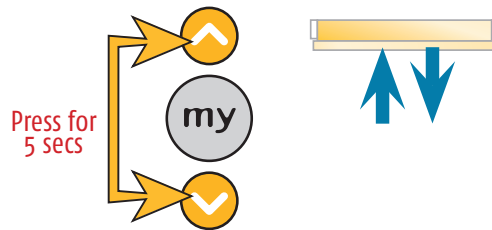


### 2 Adjusting the Upper limit position

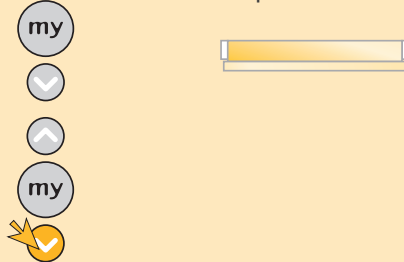
Press the Up button and send the product to the upper limit position.



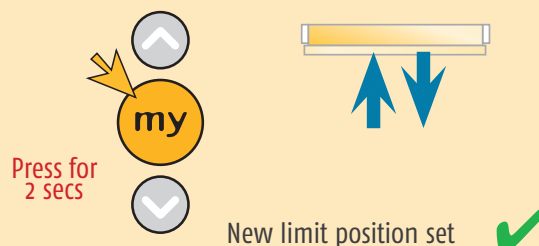
Press and hold the Up and Down buttons until the product jiggles.



Adjust to the correct position using either the Up or Down button.

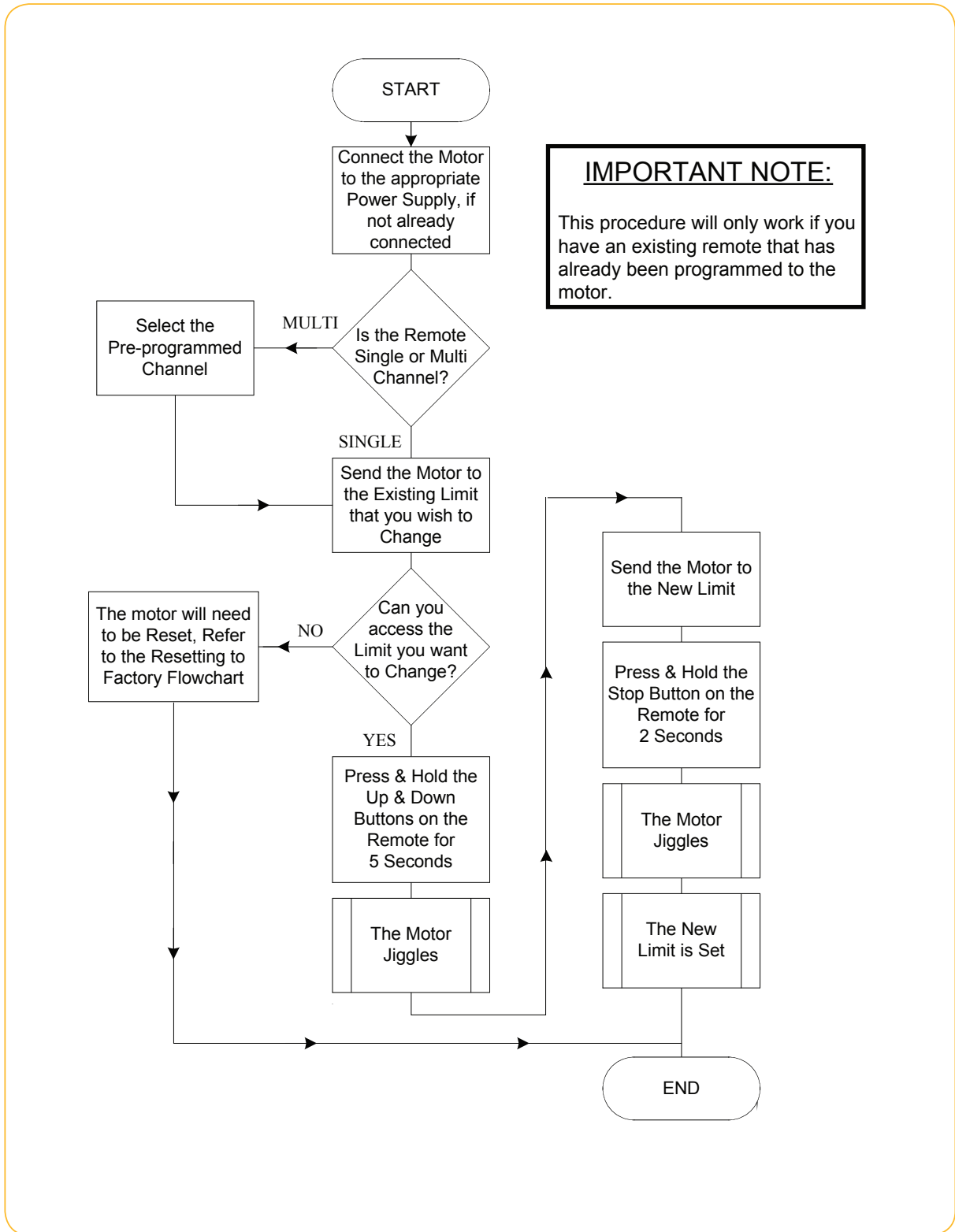


Press and hold the Stop button until the product jiggles.



# Roll Up 28 RTS & WireFree Roll Up RTS

## Adjusting RTS motor limit positions



**IMPORTANT NOTE:**  
 This procedure will only work if you have an existing remote that has already been programmed to the motor.

# Roll Up 28 RTS & WireFree Roll Up RTS

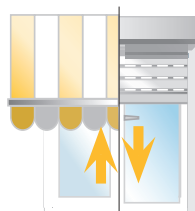
## Erasing the memory of the motor



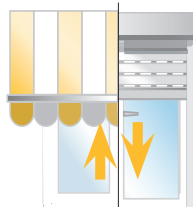
### 1 Resetting



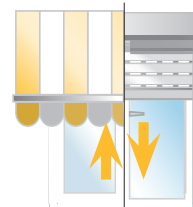
Press the program button for 12 seconds



2 sec = jiggle or LED illuminates



7 sec = jiggle or LED blinks



12 sec = jiggle or LED turns off. The motor has been reset



All remotes including remote used to finalise will be deleted along with the limit programming and any sensors that have been programmed.

# Roll Up 28 RTS & WireFree Roll Up RTS

## Erasing the memory of the motor



START

Connect the RTS motor to the appropriate power supply if not connected already

Press & hold the program button on the motor for 12 seconds

The motor will jiggle after 2 seconds

The motor will jiggle again after 5 seconds

Continue to hold the program button until the motor jiggles a third time & the Red LED turns off

The motor has been reset & all pre-programmed settings are deleted

END

### IMPORTANT NOTE:

This procedure is useful if the existing limits cannot be accessed for adjustment or if a clean start is required.